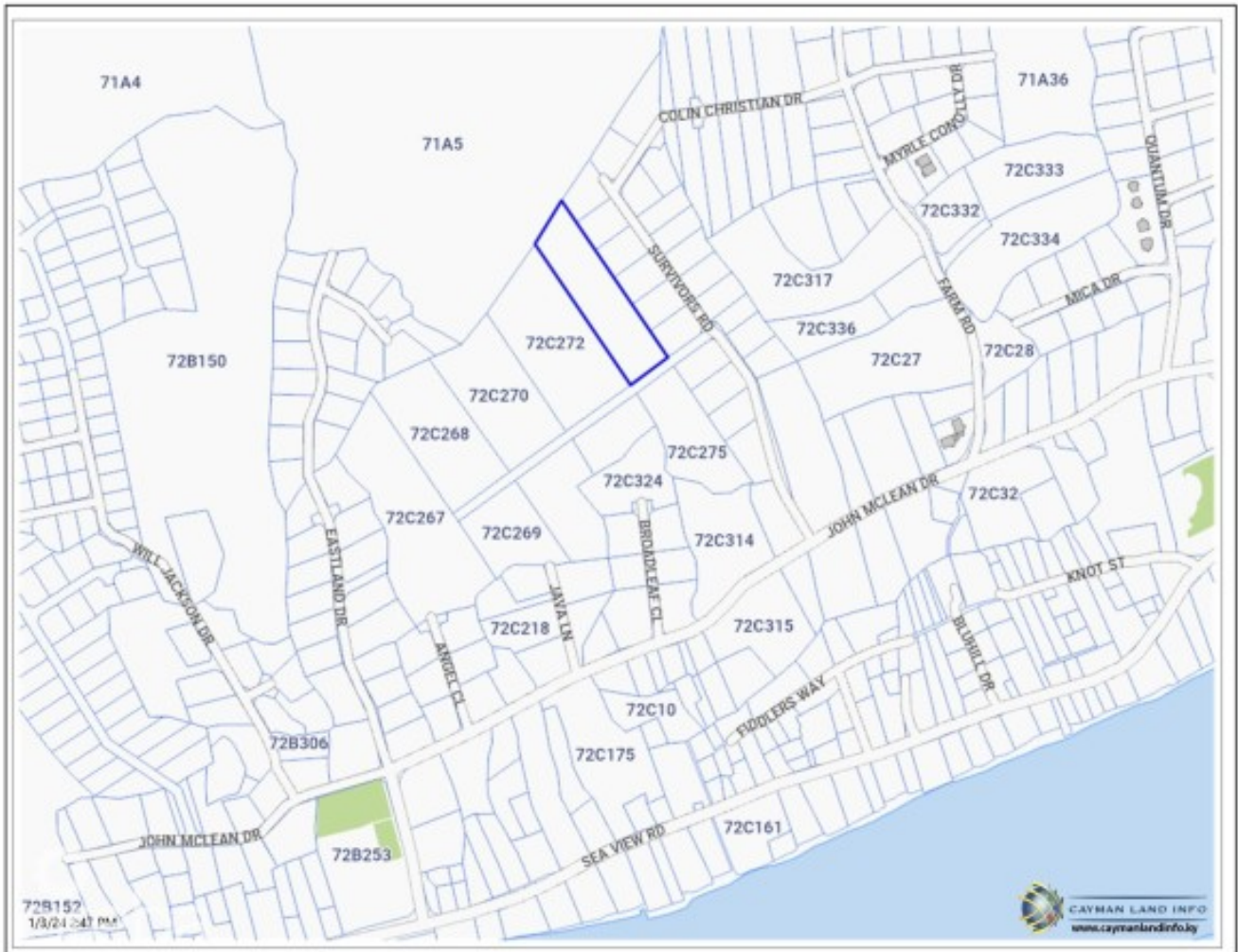


DEVELOPMENT LAND EAST END

East End, Cayman Islands

MLS# 417049

CI\$350,000



Sloane Rhulen
 sloane@rhulens.com

Residential developable land north of John McLean Drive generally 5ft above sea level. Suitable for subdivision into seven house lots or 36 apartments

Essential Information

Type	Status	MLS	Listing Type
Land (For Sale)	Current	417049	Agriculture

Key Details

Width
140.00

Depth
540.00

Block
72C

Parcel
274

Additional Features

Block
72C

Parcel
274

Views
Garden View

Zoning
**Medium Density
Residential**

Road Frontage
140

Soil
Rock