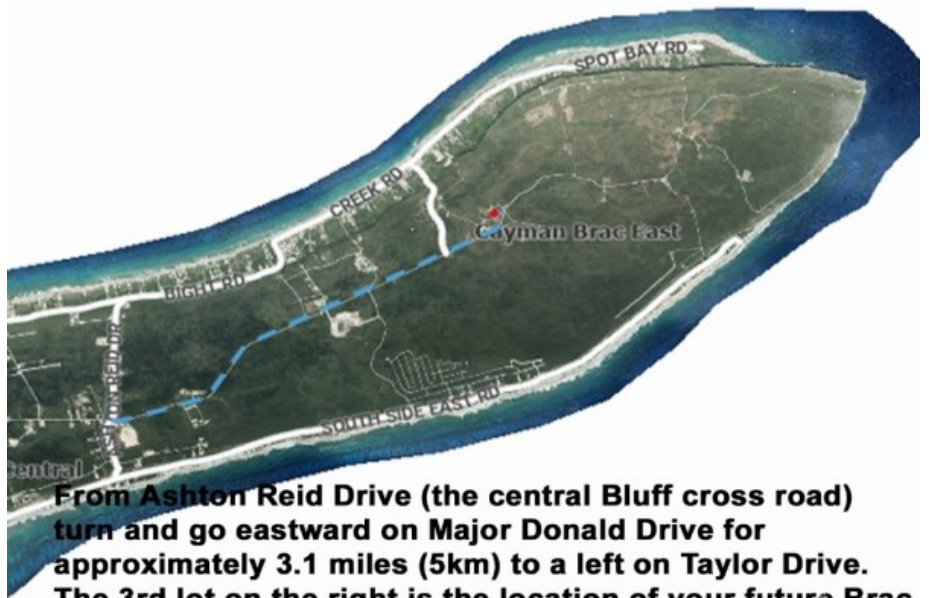
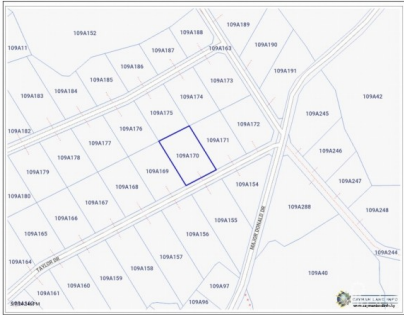


## TAYLOR DRIVE BLUFF LOT

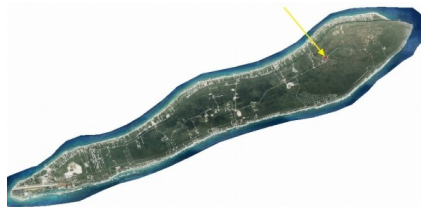
Cayman Brac East, Cayman Islands

MLS# 417393

**CI\$65,000**



**From Ashton Reid Drive (the central Bluff cross road) turn and go eastward on Major Donald Drive for approximately 3.1 miles (5km) to a left on Taylor Drive. The 3rd lot on the right is the location of your future Brac home.**





**Sloane Rhulen**  
sloane@rhulens.com

Perched majestically atop "The Bluff" in Cayman Brac, this stunning piece of land offers a unique opportunity to create your dream escape. With its enviable location on the northeastern side of Taylor Drive, this parcel of land stands proudly at around 100 feet above mean sea level, providing breathtaking panoramic views of the surrounding area. Spanning an impressive 0.35 acres, with a depth of 150 feet and a width of 101 feet, this property offers ample space to bring your vision to life. Whether you dream of building a lavish retreat or a charming getaway home, this idyllic land bank serves as the perfect canvas for your future sanctuary. Nestled in the serene surroundings of Cayman Brac, known for its stunning natural beauty and tranquil atmosphere, this property offers a peaceful retreat from the hustle and bustle of everyday life. Imagine waking up to gentle breezes and basking in the warm Caribbean sun as you sip your morning coffee on your future property. With its prime location and generous size, this land parcel presents endless possibilities for those seeking a slice of paradise in Cayman Brac. Don't miss this rare opportunity to secure your own piece of heaven and create the lifestyle you've always dreamed of. Embrace the charm and beauty of Cayman Brac with this exceptional property offering.

## Essential Information

Type	Status	MLS	Listing Type
<b>Land (For Sale)</b>	<b>Current</b>	<b>417393</b>	<b>Little Cayman/Cayman Brac</b>

## Key Details

Width	Depth	Block	Parcel
<b>101.00</b>	<b>150.00</b>	<b>109A</b>	<b>170</b>

## Additional Features

Block	Parcel	Views	Road Frontage
<b>109A</b>	<b>170</b>	<b>Inland</b>	<b>101</b>