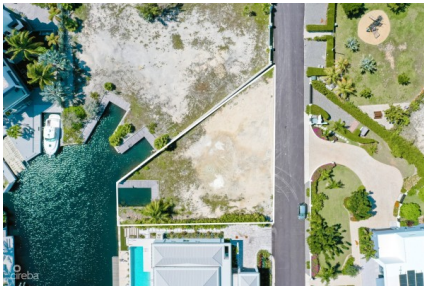


CANAL FRONT LAND IN CRYSTAL HARBOUR

Seven Mile Beach, Cayman Islands

MLS# 417523

US\$850,000





Sloane Rhulen
sloane@rhulens.com

Canal Front Living at Its Finest Discover a life where waterway style meets tropical tranquility. Welcome to this Canal Front 0.22-acre lot set in the distinguished gated community of Crystal Harbour. An oasis where dreams anchor and aspirations set sail. Exclusive Location - Located in the coveted Seven Mile Beach Corridor, this lot basks in the glory of the North Sound golf course's lush fairways. Crystal Harbour is synonymous with luxury, a locale where convenience and tranquility coalesce. A Boater's Dream -The property comes with its very own dock, a gateway to the clear waters of the Caribbean Sea. Envision your boat moored at your doorstep, ready to whisk you away at a moment's notice. Investment Prowess - Well-positioned lots in gated communities are more than just a purchase; they're a legacy. This canal front land with a dock is not just a lot; it's an investment in your future and an investment in your home. An opportunity to craft a bespoke residence or hold a tangible asset that appreciates with time. Connect with Nature - Surround yourself with the rhythm of the waves and the whispers of the breeze. This lot in Crystal Harbour offers a blissful setting to create a home harmonized with nature, whilst still enjoying the proximity to urban amenities such as Camana Bay. A Community Like No Other- Crystal Harbour is not just a location; it's a community. A community that prides itself on security, exclusivity, and an environment of friendly Neighbours. This is where you come to live your best life, surrounded by like-minded individuals who share your vision for success and vitality. How do you want to live your life? If the attraction of Canal Front luxury calls to you, connect with us for an exclusive insight into this remarkable opportunity. Contact us today and take the first step towards living the life you've envisioned in the Cayman Islands.

Essential Information

Type Land (For Sale)	Status Current	MLS 417523	Listing Type Agriculture
--------------------------------	--------------------------	----------------------	------------------------------------

Key Details

Width 128.00	Depth 159.00	Block 17A	Parcel 264
------------------------	------------------------	---------------------	----------------------

Additional Features

Block 17A	Parcel 264	Views Canal Front	Zoning Low Density residential
---------------------	----------------------	-----------------------------	--

Sea Frontage 76	Road Frontage 127.5
---------------------------	-------------------------------