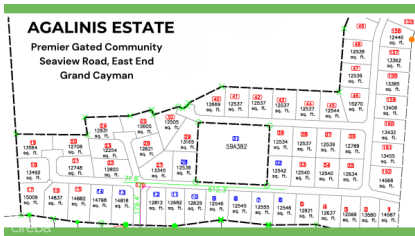


## AGALINIS ESTATES - GATED COMMUNITY ON SEAVIEW ROAD - DUPLEX LOT 7

Midland East, Cayman Islands

MLS# 417786

**CI\$175,700**



**Sloane Rhulen**  
 sloane@rhulens.com

Welcome to Agalinis Estates, a premier gated community on Seaview Road, East End, featuring prime residential lots for sale. Just half a mile up from the Frank Sound Junction, lots will be cleared, filled, and equipped with underground utilities, making them ready for construction. These lots are ideal for single-family homes or duplexes providing more flexibility in home design. This phased development will feature 164 lots spreading over 101 acres, with 23 acres dedicated to preserving the Agalinis Kingsii, home to the rare endemic plant of the same name. Residents will have convenient access to nearby beaches, Clifton Hunter High School, and just 2 miles from Health City. This development offers a peaceful retreat from the hustle and bustle of Cayman, providing a breath of fresh air where you can truly feel at home. With introductory affordable pricing, this is an excellent investment opportunity and a perfect way to enter the property market. The community will be safeguarded for years to come, with robust covenants, ensuring the security and appreciation of your property value. Get in touch for more details.

### Essential Information

Type <b>Land (For Sale)</b>	Status <b>Pen/Con</b>	MLS <b>417786</b>	Listing Type <b>Agriculture</b>
--------------------------------	--------------------------	----------------------	------------------------------------

## Key Details

Width <b>1.00</b>	Depth <b>1.00</b>	Block <b>59A</b>	Parcel <b>383-L7</b>
----------------------	----------------------	---------------------	-------------------------

## Additional Features

Block <b>59A</b>	Parcel <b>383-L7</b>	Views <b>Garden View, Inland</b>	Zoning <b>Low Density residential</b>
---------------------	-------------------------	-------------------------------------	--

Road Frontage <b>1</b>	Soil <b>Other</b>
---------------------------	----------------------