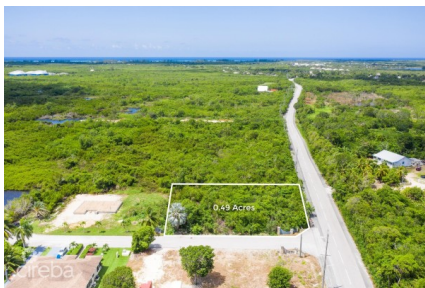


KAYLA'S ESTATES 0.49 ACRES, RESIDENTIAL LOT

Midland East, Cayman Islands

MLS# 418002

CI\$200,000



Sloane Rhulen
sloane@rhulens.com

Discover an expansive 0.49 acre parcel in the quaint development of Kayla's Estates, nestled in the serene Frank Sound area. This idyllic neighbourhood is the perfect setting to build your dream family home. Imagine your children safely riding their bikes through tree-lined streets in a friendly, welcoming community. Don't miss this incredible opportunity to create lasting memories in a picturesque and secure environment. Your future awaits at Kayla's Estates.

Essential Information

Type
Land (For Sale)

Status
Pen/Con

MLS
418002

Listing Type
Agriculture

Key Details

Width
167.00

Depth
134.00

Block
58A

Parcel
120

Additional Features

Block
58A

Parcel
120

Views
Inland

Zoning
**Low Density
residential**

Road Frontage
142

Soil
Other