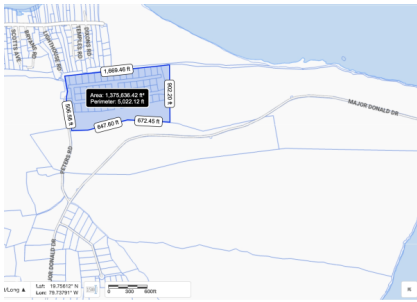


(31 ACRES) 56 BLUFF EDGE DEVELOPMENT PARCELS AT 150FT. THE HIGHEST POINT IN THE CAYMAN ISLANDS.

Cayman Brac East, Cayman Islands

MLS# 418205

CI\$1,995,000



Sloane Rhulen
 sloane@rhulens.com

A fantastic one-of-a-kind opportunity to acquire a 31 acre parcel right on the Bluff Edge, already split into 56 subdivided house plots ranging from 0.23-0.43 acres in size and with direct access off Peters Road. There is nothing else like this on the Bluff Edge which allows someone to come in and develop with the most elevated views in the Cayman Islands at 150ft. This is the single highest point in all of the Cayman Islands. This land also attaches to the famous Nature Lighthouse trail allowing future home owners access on their doorstep to the beautiful surrounding area. This opportunity is subject to a future subdivision required from Parcel 111A73 which the Vendor's will undertake once an offer is accepted. Images provided by Lands & Survey

Essential Information

Type	Status	MLS	Listing Type
Land (For Sale)	New	418205	Little Cayman/Cayman Brac

Key Details

Width	Depth	Block	Parcel
1669.00	902.00	111A	(PART)73&13-68

Additional Features

Block
111A

Parcel
(PART)73&13-68

Views
Water View