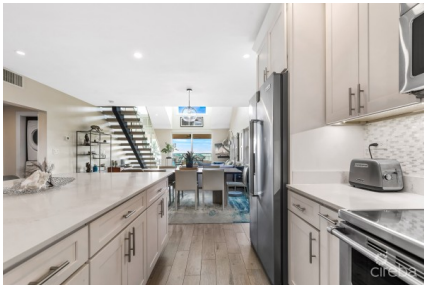


CORAL BAY VILLAGE 24, SPOTTS TOWNHOME

Spotts, Cayman Islands

MLS# 418661

US\$1,899,000





Sloane Rhulen
sloane@rhulens.com

Experience modern elegance at this stunning beachfront condo in the exclusive Coral Bay Village, set in the peaceful Spotts Beach area of Grand Cayman. This sophisticated 3-bedroom, 3-bathroom duplex spans 2,500 sq. ft. over two levels, combining contemporary style with everyday comfort. Thoughtfully designed, the home features a spacious mezzanine den, high-end furnishings, and top-of-the-line appliances. The highlight is the large beachfront terrace, seamlessly extending the living space outdoors with breathtaking ocean views. Newly equipped with an automatic shutter and shade system, it offers privacy and protection for year-round enjoyment. A dedicated parking spot is conveniently located right at the base of the building's steps. Inside, the bright, open-plan layout creates a relaxed and luxurious feel. Every detail reflects top-quality craftsmanship, making the entire space feel warm and inviting. Living at Coral Bay Village 24 means more than just owning a home, it's a lifestyle. Enjoy access to premium amenities like CCTV security, a sparkling pool, a screened tennis court, ample visitor parking, and the area's most pristine private beach. Whether you're looking for a permanent home, a vacation escape, or a rental property, Coral Bay Village #24 offers it all: modern style, unbeatable beachfront access, and thoughtful upgrades. Welcome to your dream beachfront retreat.

Essential Information

| | | | |
|---------------------------------------|----------------------|----------------------|------------------------------------|
| Type Residential (For Sale) | Status New | MLS 418661 | Listing Type Condominium |
|---------------------------------------|----------------------|----------------------|------------------------------------|

Key Details

| | | | |
|---------------------------|--------------------------|---------------------|------------------------|
| Bed 3 | Bath 3 | Block 25C | Parcel 80H30 |
| Year Built 1981 | Sq.Ft. 2500.00 | | |

Additional Features

| | | | |
|---------------------------|-------------------------|-------------------------|----------------------------|
| Block 25C | Den No | Parcel 80H30 | Views Beach View |
| Foundation Slab | Floor Level 2 | Furnished Yes | Den Yes |
| Garage No | | | |