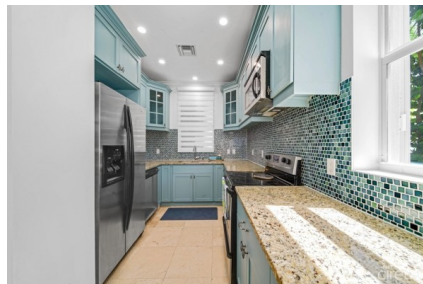
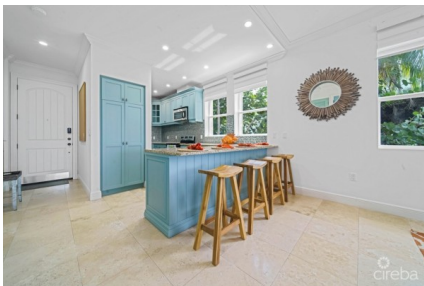


KISHA 105 | 2BDRM WATERFRONT WALKOUT -COASTAL CHIC CORNER UNIT

George Town South, Cayman Islands

MLS# 418932

CI\$1,220,000





Sloane Rhulen
sloane@rhulens.com

KISHA 105 | Developer Owned Waterfront Corner Walkout
Introducing Kisha 105, a bright and airy corner unit offering the perfect blend of coastal elegance and Caribbean Cottage Chic design. This 2-bedroom, 2-bathroom ground-floor corner residence boasts uninterrupted natural light, direct walk-out access to the pool and seaside, and thoughtfully curated interiors, providing a refined coastal living experience. A rare opportunity—this developer-owned unit, available to the market for the first time, features premium upgrades and has been meticulously maintained. This sun-filled end unit, has been professionally designed to offer warmth, sophistication, and comfort. This is an exclusive, quiet smaller complex, offering a tranquil lifestyle free from traffic congestion, with convenient access to key destinations. Recently renovated, this unit showcases a Caribbean Cottage Chic interior, featuring high-end finishes, brand-new stainless steel appliances, and a fully furnished layout, delivering a turnkey living experience. The open floor plan flows effortlessly between the main living areas and the private corner patio is perfect for outdoor dining, lounging, and enjoying panoramic seaside views. The patio offers direct access to the oceanfront sun lounge area, complete with a seaside dipping pool, soak tub, and sea-ladder access to crystal-clear Caribbean waters, ideal for daily swims, world-class snorkeling, and scuba. The gourmet kitchen includes an oversized granite bar-island and brand-new stainless steel appliances. Fully furnished with elegant designer pieces, original local artworks, and professionally designed interiors, it offers a turnkey living experience. Modern comforts include a new AC condenser, energy-efficient lighting, a laundry nook with high-efficiency washer/dryer, private exterior storage room and two dedicated parking spaces. The Master Suite offers a tranquil retreat with a queen bedroom set opening onto a private deck featuring poolside and oceanfront views. The spa-inspired en-suite bathroom includes double vanity sinks, an oversized travertine shower with a teak bench, a soaking jet tub, a private water closet, and a spacious walk-in closet. The second bedroom serves as a flexible guest suite with a queen bed, a walk-in closet, and ensuite bathroom. Life at Kisha 105 transcends the ordinary, offering a corner unit experience with sun-drenched interiors, seamless outdoor living, and unparalleled waterfront access. Morning swims in turquoise waters, sunset cocktails on the patio, and seaside lounging define the essence of upscale island living. This is more than a home—this is a lifestyle. Your corner slice of paradise awaits.

Essential Information

Type	Status	MLS	Listing Type
Residential (For Sale)	Current	418932	Condominium

Key Details

Bed 2	Bath 2	Block 6D	Parcel 2H5
Year Built 2008	Sq.Ft. 1660.00		

Additional Features

Block 6D	Den No	Parcel 2H5	Views Water Front, Ocean Front
Floor Level 1	Furnished Yes	Den No	Garage No