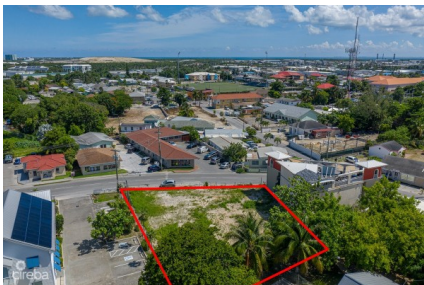
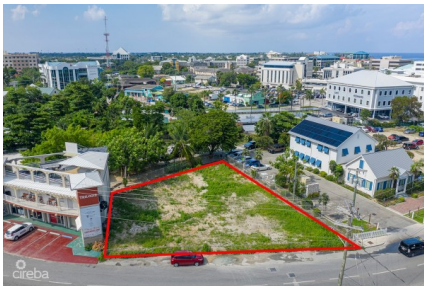


PRIME COMMERCIAL LAND WITH APPROVED PLANS ON MARY STREET

George Town Common, Cayman Islands

MLS# 419044

CI\$1,550,000





Sloane Rhulen
sloane@rhulens.com

Seize this exceptional investment opportunity in the heart of George Town’s thriving commercial district! Strategically located on renowned Mary Street, this high-traffic property is just steps from the cruise port, top restaurants, and major retail hubs, ensuring maximum exposure and foot traffic. With approved plans already in place for a two-story commercial building, investors can hit the ground running with a development perfectly suited for office spaces, retail, or a mixed-use commercial venture. This turnkey opportunity eliminates lengthy approval processes, allowing you to capitalize on George Town’s high-demand commercial sector immediately. Why Invest? Prime Location – Surrounded by major businesses and tourist activity Ready-to-Build – Approved plans mean a fast-tracked development timeline High ROI Potential – Strong demand for commercial space in this sought-after area Rare Opportunity – Limited availability in George Town’s commercial hub A premier investment like this won’t last! Whether you’re looking to develop, lease, or hold for long-term appreciation, this property is ready to deliver returns.

Essential Information

Type Land (For Sale)	Status New	MLS 419044	Listing Type Commercial
--------------------------------	----------------------	----------------------	-----------------------------------

Key Details

Width 114.00	Depth 118.00	Block OPY	Parcel 177
------------------------	------------------------	---------------------	----------------------

Additional Features

Block OPY	Parcel 177	Views Inland	Zoning Commercial
---------------------	----------------------	------------------------	-----------------------------